

# **Proposed Content for the Webpage of the Internal Quality Assurance Cell of the External Degrees and Extension Courses Unit of the University of Sri Jayewardenepura (IQAC/ EDECU)**

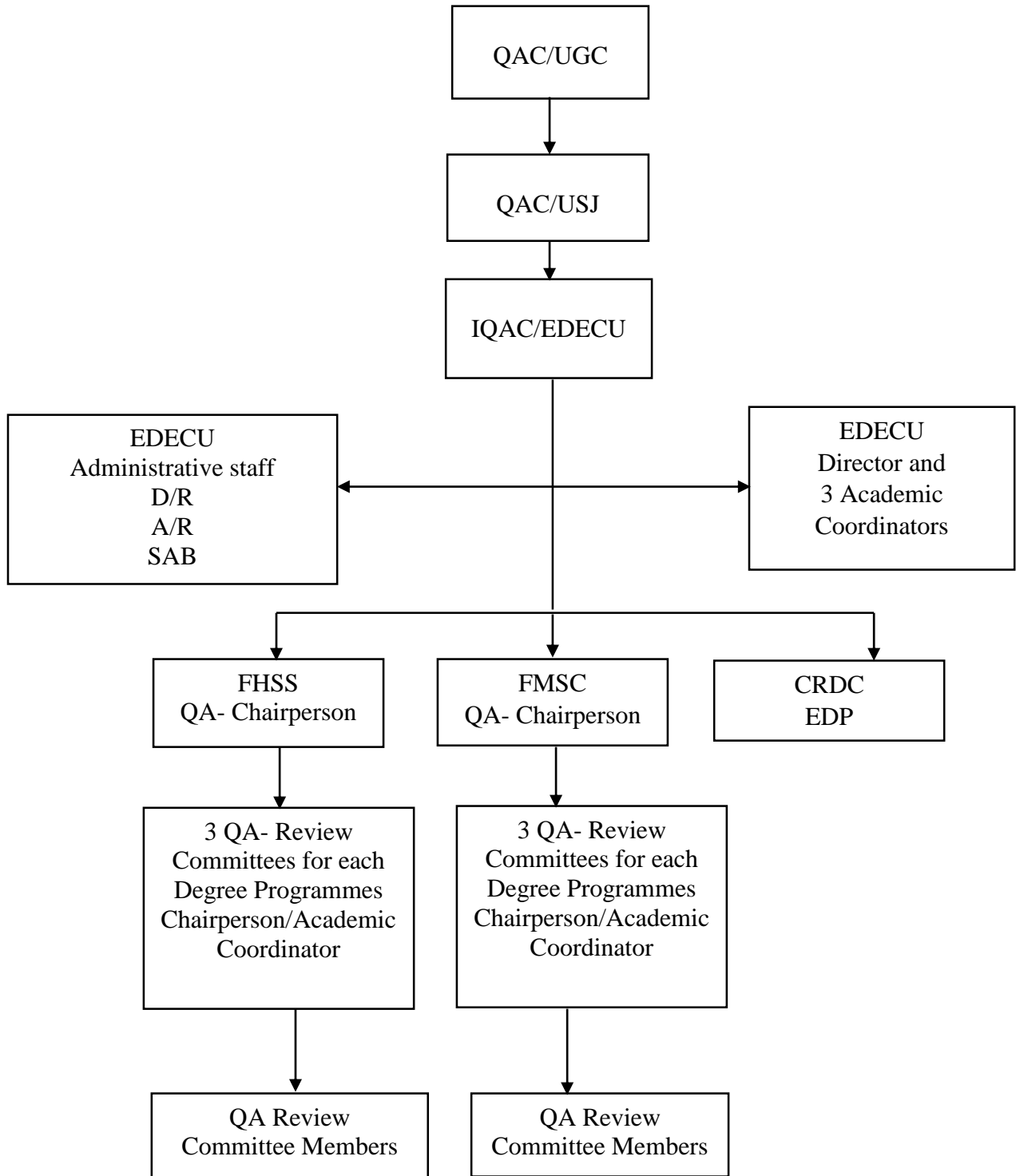
## **About**

The External Degrees and Extension Courses Unit (EDECU) of the University of Sri Jayewardenepura, being a highly recognized degree offering institution falling under the purview of the University Grant Commission is continuously in the process of sustaining and upgrading its quality and standards. The Internal Quality Assurance Cell of EDECU (IQAC/ EDECU), which has been set up with the aim of promoting the quality culture within the institution through a holistic approach on a day to day basis, is the responsible body for implementing the quality assurance programmes, policies and procedures in EDECU while complying with the guidelines of the Centre for Quality Assurance of the University of Sri Jayewardenepura.

## **Objectives of the Internal Quality Assurance Cell of External Degrees and Extension Courses Unit**

1. To develop a system to improve the academic and administrative performance of the EDECU towards quality enhancement.
2. To assure all the stakeholders connected with EDECU about the quality of education provided.
3. To facilitate internalization of quality culture.
4. To institutionalize all best practices of the units /departments /faculties.
5. To act as a change agent in the institution.

## Organizational Chart of the IQAC/ EDECU



## **Programmes and Workshops**

### **Programme Review of the External Degree Programmes**

As per the directions of Quality Assurance and Accreditation Council (QAAC) of University Grants Commission (UGC), the IQAC/ EDECU is in the process of conducting the programme review of five degree programmes; i) Bachelor of Management (Public) General (External) Degree Programme and ii) Bachelor of Commerce (General) External Degree Programme representing the Faculty of Management Studies and Commerce (FMSC), and iii) Arts (General) External Degree Programme, iv) Bachelor of Arts in English (General) External Degree Programme and v) Bachelor of Social Sciences in Environmental and Development Studies (General) External Degree Programme, representing the Faculty of Humanities and Social Sciences (FHSS).

In line with the Manual for Quality Assurance of External Degree Programmes and Extension Courses offered by the University, the process of programme review has been carried out since the last year. For each external degree programme., the evidence for meeting 90 standards under 6 criteria are being compiled both in physical and virtual mode. By the end of the Month of January in 2022, the measures were taken by the relevant authorities of each degree programme to submit the respective Self Evaluation Report (SER) to the UGC.

## **Operational Plan for Programme Review of the External Degree Programmes**

<b>Activity</b>	<b>Time Period</b>
1. Initial meeting with academic coordinators	10th September 2021
2. Forming Programme Review Committees for all External Degree Programmes	End of September 2021
3. Approval from Study Boards and Management Committee and issue appointment letters	October 2021
4. Conducting workshop regrading QA –EDP	October 2021
5. Conducting meetings by Programme Review Committees	November 2021
6. Review progress of individual committees regarding the completion of filling System	December 2021
7. Commencing review and write the self-evaluation report	January to June 2022

### **Workshops**

To guide the stakeholders involved in the process of programme review of EDPs a couple of workshops and meetings were organized with the contribution of several resource persons. In addition to that, from time to time, a number of meetings with the committee members of each degree programme were also conducted to review the progression of the process.

## Staff

### Academic Staff

<b>Name</b>	<b>Designation</b>	<b>Contact Number</b>	<b>Email</b>
Prof. Ven. P. Sangasumana Thero	Director/ EDECU	011 275 8746 071 464 2788	pssumana@sjp.ac.lk
Prof. M. G. Lalith Ananda	Deputy Director/ Learning Resources	011 275 8163 077 7313 949	mlalithananda@sjp.ac.lk
Mr. C. Ranil Peiris	Deputy Director/ Evaluation Learner Support	011 275 8821 071 4277466	cranil@sjp.ac.lk
Prof. M. D. Pushpakumari	Deputy Director/ Registration and Examination. Co-chairperson of the IQAC/ EDECU	011 275 8820 011 280 3472 077 346 5280	pushpakumarimd@sjp.ac.lk
Dr. M. A. S. Wijesinghe	Co-chairperson of the IQAC/ EDECU	011 275 8746 071 801 6295	shanthawi@sjp.ac.lk
Mr. W. M. N. Weerathunga	Chairperson/ Programme Review Committee of Bachelor of Science Management (Public) General (External) Degree	011 275 8815 077 314 7414	weerathunge@sjp.ac.lk
Dr. K. M. Vilani Sachithra	Chairperson/ Programme Review Committee of Bachelor of Commerce (General) External Degree	077 601 8957	vilani@sjp.ac.lk
Prof. K. M. Alexander	Co- Chairperson/ Programme Review Committee of Bachelor of Arts (General) External Degree	071 823 8654	alex@sjp.ac.lk
Prof. G. A. Gamini	Co- Chairperson/ Programme Review Committee of Bachelor of Arts (General) External Degree	071 447 8734	gaminimaneth@sjp.ac.lk
Dr. S. S. Pereira	Chairperson/ Programme Review Committee of Bachelor	077 233 9118	sujeevasebastian@sjp.ac.lk

	of Arts in English (General) External Degree		
Prof. T. M. S. P. K. Thennakoon	Chairperson/ Programme Review Committee of Bachelor of Social Sciences in Environmental and Development Studies (General) External Degree	071 801 6295	sunethrapk@sjp.ac.lk

### **Administrative Staff and Supportive Staff**

Name	Designation	Contact Number	Email
Mr. L. L. Wasantha Perera	Deputy Registrar	011 280 2136 071 632 7569	wasantha@sjp.ac.lk
Ms. A. D. S. Samadaree	Senior Assistant Registrar	011 280 2851 070 258 3118	samadaree@sjp.ac.lk
Ms. G. W. L. Priyanthika	Senior Assistant Bursar	011 275 8895 011 280 1252 077 916 1744	lalani@sjp.ac.lk
Ms. H. R. A. Sanuri Vindula	Management Assistant/ Bachelor of Science Management (Public) General (External) Degree	071 348 2763	japsanvinu@gmail.com
Ms. D. V. Sanduni Subhashini Fonseka	Management Assistant/ Bachelor of Commerce (General) External Degree	070 208 7546	sandunisubhashini19@gmail.com
Ms. K. T. N. Madhuwanthi	Management Assistant/ Bachelor of Arts (General) External Degree	071 383 3320	ktnmdvp@gmail.com
Ms. M. P. S. S. Samaranayaka	Management Assistant/ Bachelor of Arts in English (General) External Degree	070 245 4113	saubhagyasamaranayaka@gmail.com
Ms. W. A. M. B. Weerasuriya	Management Assistant/ Bachelor of Social Sciences (General) External Degree in Environmental and Development Studies	070 319 4911	heliweerasuriys@yahoo.com

